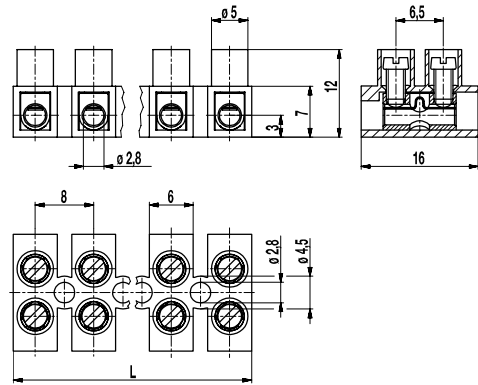
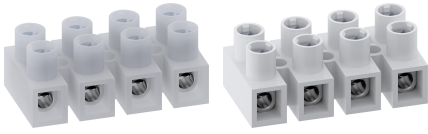


302-N(-HDS)

Socket terminal strip
Screw connection, low profile version



GENERAL INFORMATION

Pitch	8 mm
No. of poles	1 - 12
Areas of application	For lighting applications and similar electrical equipment.

TECHNICAL DATA

Clamping Range	<i>solid / stranded / AWG</i>		
<i>without wire protector</i>	0,5 - 4 mm ² / 0,5 - 2,5 mm ² / 20 - 12 AWG		
<i>with wire protector</i>	0,34 - 2,5 mm ² / 0,34 - 2,5 mm ² / 22 - 14 AWG		
Rated Cross Section	1,5 mm ²		
Wire Stripping Length	5 mm ± 0,5 mm		
Overvoltage Category	III	III	II
Pollution Severity Level	3	2	2
Rated Voltage	250 V	320 V	320 V
Rated Impulse Voltage	4 kV	4 kV	4 kV
Rated Insulation Voltage	250 V acc. to EN 60998-1		
Rated Current	17,5 A		
Torque	0,4 Nm		

APPROVALS

	Current [A]	Voltage [V]	Group	AWG	[Nm]
	10	300	B,D	20 - 12	0,4
	20	300	B	26 - 12	0,4 [1]
	10	300	D,E	26 - 12	0,4 [1]
	Current [A]	Voltage [V]	mm ²		
	17,5	250	1,5		

MATERIAL

Moulding	PA, natural, V-2 (PA, white, V-0) Details in parentheses apply for "no flame" products.
Comparative Tracking Index	CTI ≥ 600
Insulating Group	I
Temperature Range	-40°C up to 100°C
Terminal body	Nickel plated brass
Screw	M2,6; zinc plated steel, blue passivated
Wire protector	Stainless steel strip

OPTIONS / ACCESSORIES

- Marking options on the screw guides
- Marking strips BST-302
- Jumper 302-J
- Screws made out of brass
- Up to 26 poles possible
- Socket with blind hole

[1] 302-N-HDS: 26 - 14 AWG

CONFIGURATIONS

Version	Poles	Item	Article number	Item	Article number	Length (L)	PU
Standard	2	302-N/02	12.820.043	302-N-HDS/02	32.820.043	15,00 mm	2000
Standard	3	302-N/03	13.820.043	302-N-HDS/03	33.820.043	23,00 mm	2000
Standard	4	302-N/04	14.820.043	302-N-HDS/04	34.820.043	31,00 mm	1000
Standard	6	302-N/06	16.820.043	302-N-HDS/06	36.820.043	47,00 mm	100
Standard	8	302-N/08	18.820.043	302-N-HDS/08	38.820.043	63,00 mm	70
Standard	10	302-N/10	20.820.043	302-N-HDS/10	40.820.043	79,00 mm	50
Standard	12	302-N/12	22.820.043	302-N-HDS/12	42.820.043	94,00 mm	50
No-flame	2	302-N/02-V0	12.820.044.EN6	302-N-HDS/02-V0	32.820.044.EN6	15,00 mm	2000
No-flame	4	302-N/04-V0	14.820.044.EN6	302-N-HDS/04-V0	34.820.044.EN6	31,00 mm	1000
No-flame	5	302-N/05-V0	15.820.044.EN6			39,00 mm	1000
No-flame	12	302-N/12-V0	22.820.044.EN6	302-N-HDS/12-V0	42.820.044.EN6	94,00 mm	50

further number of poles on request

